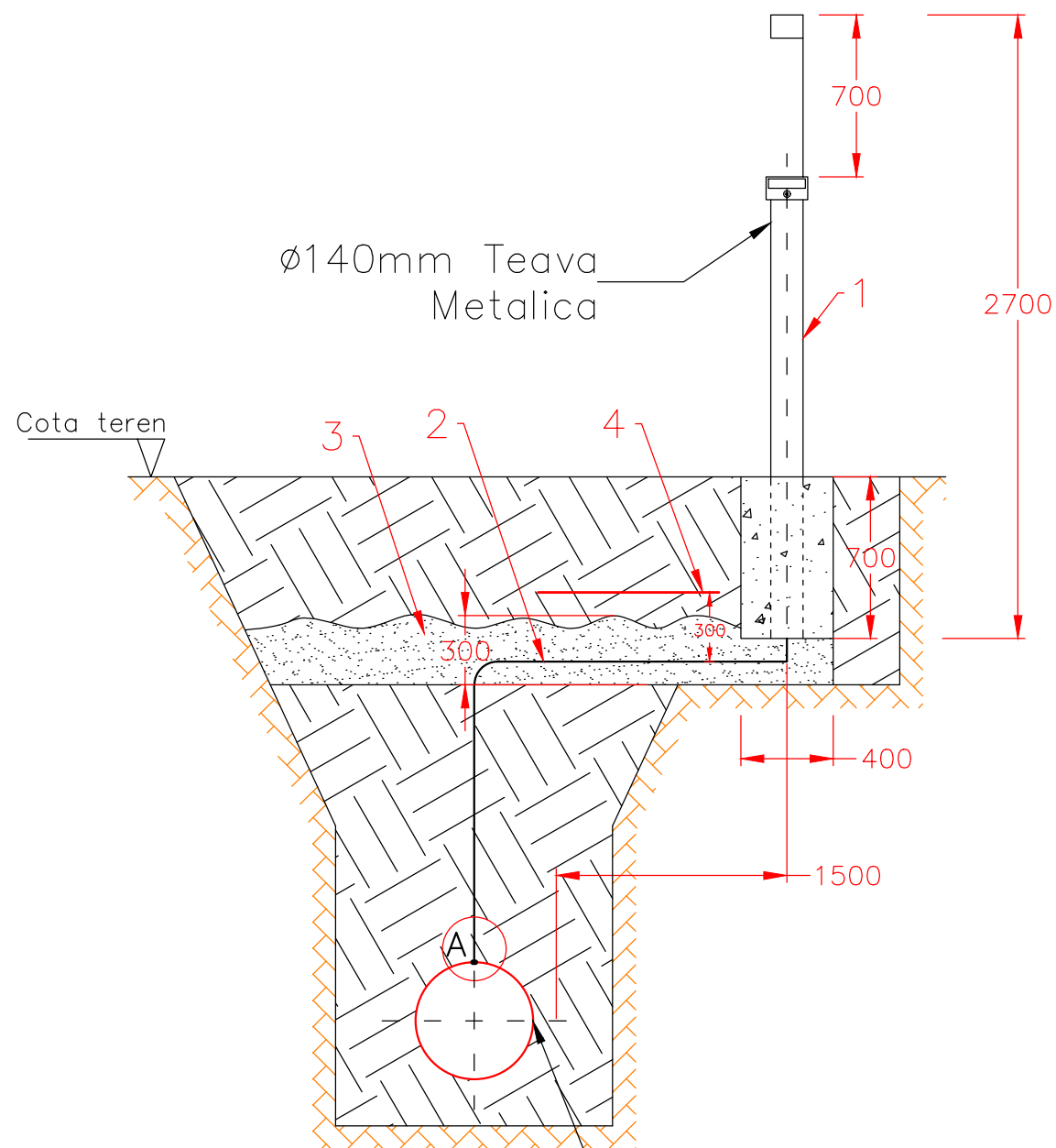


Acesta este desen CAD si nu va fi modificat manual



Conducta
titei DN300/DN350

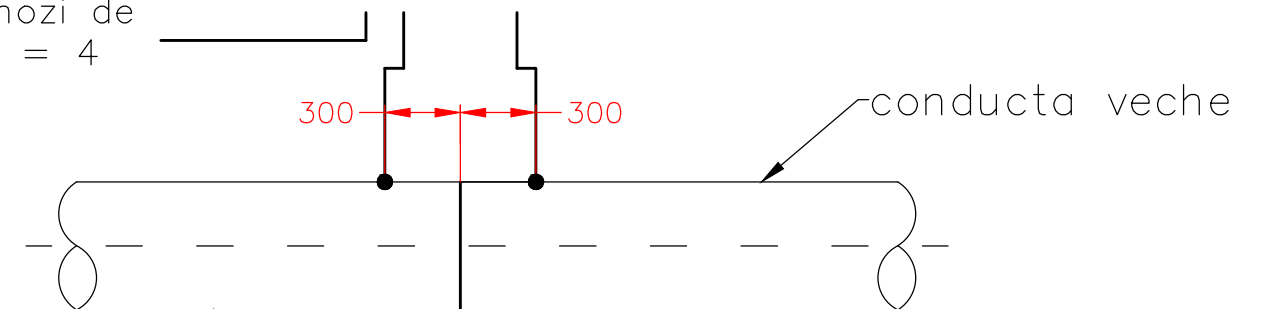
Nota:

- Priza de potential se va monta la cel mult un metru lateral fata de axul conductei;
- Se vor monta 4 anozii de zinc, legati la conducta;



Detaliu A

Catre priza de
potential

De la anozii de
zinc n = 4



Conducta proiectata
DN300/DN350

4	Folie avertizoare	-	1	PVC	L = 2 m	-	
3	Pat protector	-	-	nisip	-	-	
2	Cablu CYY 1x25 mm ²	SR CEI 60502-1	3	cupru	-	-	
1	Priza de potential	STAS 7335/8-85	1	-	-	-	
Poz.	DENUMIRE	Nr. desen sau STAS	BUC	MATERIAL	OBSERVATII	MASA kg/buc	
0	12.2023	Tema de proiectare conform caiet de sarcini	Documetatie avizata		Victor DINITA	Liviu ANDREI	Antonio TACHE
REVIZIA	DATA	DESCRIEREA REVIZIEI			REVIZUIT	VERIFICAT	APROBAT
MATERIAL		MASA NETA		SCARA PLAN		DATA	
-		-		N/A		12.2023	
Masurat	Victor DINITA	Punerea în siguranta a conductelor de 12" si 14" Cartojani-Ploiesti la traversarea pârlului Cricovul Dulce					Nr. Proiect CON-005 2021 Faze proiect P.T.
Desenat	Victor DINITA						
Verificat	Liviu ANDREI						
Aprobat	Antonio TACHE						
				Priza de potential si detaliu montaj conducta			
CON-005-2021-10				PLANSA 1/1		FORMAT A3	